



Cong Relief Road Aims



Reduce HGVS



Improve Road Safety



Lower Emissions



Improve Air Quality



Reduce Travel Time



Facilitate Cycling



Facilitate Walking



Why your say Matters

Mayo County Council are currently at Phase 2 – Option Selection and received extensive feedback as part of the first round of public consultation. This has been taken into consideration along with a wide variety of factors, including heritage and environmental, to identify a number of potential route corridors for the proposed relief road.

We are now seeking further public feedback on these potential options to inform the route option selection process. This consultation provides an opportunity for you to share local knowledge and insights as well as highlight opportunities and constraints relating to the respective options, which will help in identifying the optimal design solution. Visit www.congreliefroad.com to have your say.



Comhairle Contae Mhaigh Eo
Mayo County Council



Cong Relief Road

*in association with Galway County Council and
Funded by the Department of Transport*



Have your say at: www.congreliefroad.com

About the Project

Cong is a charming village nestled between the stunning Lough Mask and Lough Corrib, straddling the borders of County Mayo and County Galway. While its rich history and scenic beauty draw thousands of visitors each year, the village also faces challenges due to its narrow winding streets and high traffic volumes.

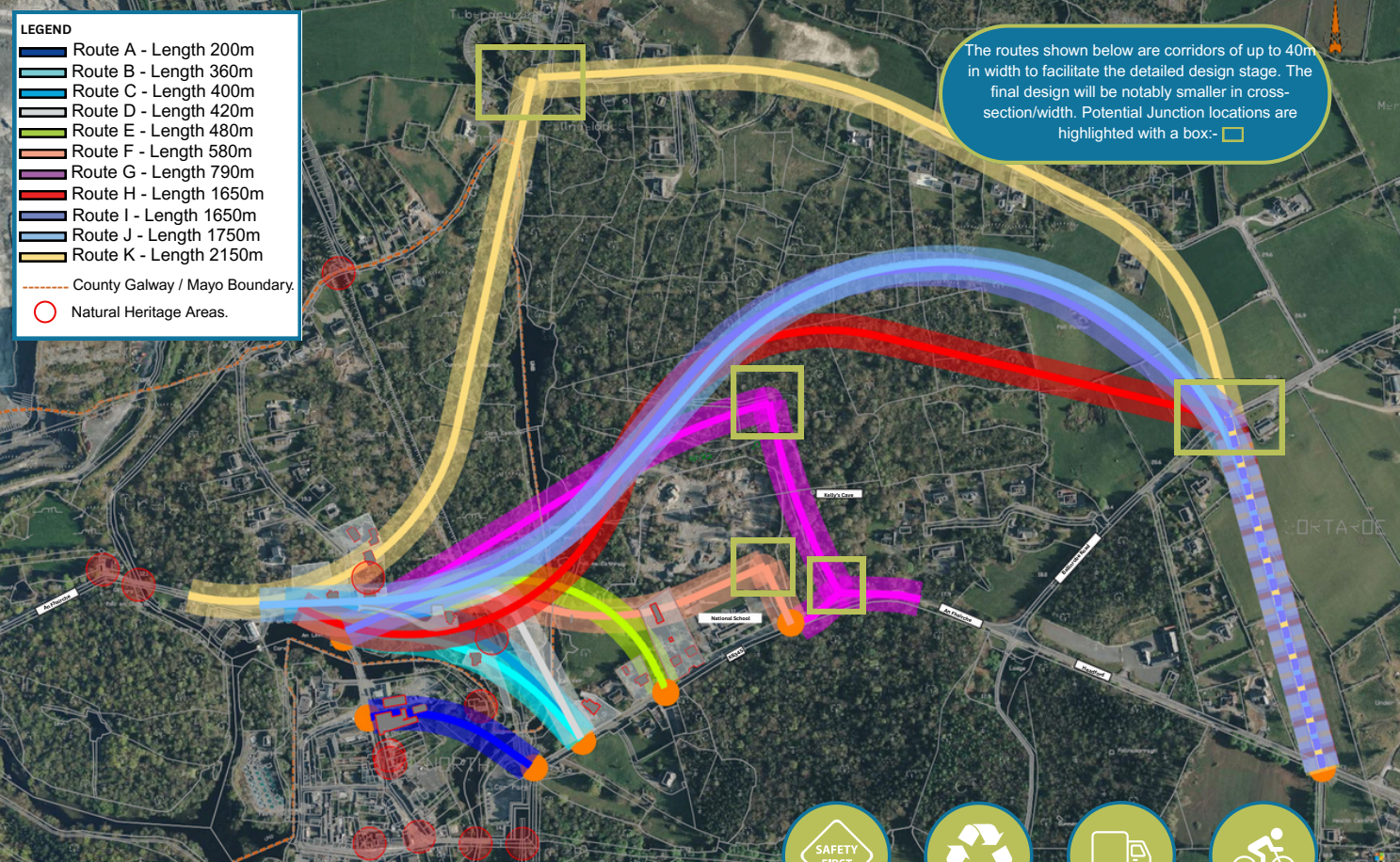
Currently, up to 100 heavy goods vehicles (HGVs) pass through Cong daily, creating safety concerns and congestion affecting road users, residents and businesses alike. These issues are particularly pronounced during the summer, when the village is bustling with domestic and international tourists.

To address these challenges, Mayo County Council, are proposing to design and construct a relief road that will cross the county boundary and be partially located in County Mayo and County Galway. This new road will provide an alternative route for through traffic without the need to travel into the village centre. This will be particularly effective in diverting the large proportion of HGVs away from the centre and facilitate an improved quality of environment with enhanced safety for those in the village.

Project Objectives

- **Improve Safety** – Enhance pedestrian and cyclist safety by reducing HGV traffic through the village.
- **Protect Heritage and Environment** – Minimise impacts on Lough Corrib and reduce environmental and land use disruption.
- **Promote Sustainability** – Lower emissions and align with Government environmental and road safety goals.
- **Revitalise Cong Village** – Improve air and noise quality, support urban renewal, and boost tourism appeal.
- **Support Community and Accessibility** – Facilitate walking, cycling, and social inclusion through reduced traffic volumes.
- **Enhance Road Efficiency** – Reduce travel times and improve journey reliability, especially for HGVs.

Have your say at:
www.congreliefroad.com



What happens Next?

Further environmental studies and site investigation are being carried out which, in conjunction with the public consultation outcome, will be used to progress the scheme through the option selection phase. This involves the options being developed, appraised and evaluated under the following criteria:

Economy - Environment - Safety- Accessibility & Social Inclusion- Integration - Physical Activity

The ultimate goal of this process is to identify the option that best addresses the scheme's objectives. A further Public Consultation will be held, communicating the preliminary findings of Stage 2 (Project Appraisal Matrix) and presenting the Preferred Option.

Following the Option Selection Phase, the scheme will then be progressed through Preliminary Design, Environmental Impact Assessment, CPO, Planning and the Statutory Processes, subject to the availability of funding.

	Studies & Research	Publications & Milestones	Public Participation
Phase 2 Option Selection	Complete 2024	Study Area Identification & Constraints Development	Study Area & Constraints Mapping
	WE ARE HERE 2025	Stage 1 Option Development & Refinement	Option Identification
	2025	Stage 2 Option Appraisal to Support Identification of Emerging Preferred Option	Emerging Preferred Option Identification
Phase 3 Design & Environmental Evaluation	Q1/Q2 2026	Option Selection Report & Preferred Option Confirmation	Preferred Option Identification
	Q3 2026	Complete Design Appraisal & Statutory Documents	Planning Submission Preparation
Phase 4 Statutory Process	Q4 2026	Subject to Government Approval Make Planning Submission	Issue of Planning Submissions & Orders
			Stage 1 & 2 Options Non-Statutory Public Consultation
			Emerging Preferred Option Non-Statutory Public Consultation
			Stakeholder Engagement
			Stakeholder Engagement
			An Bord Pleanála Statutory Consultation